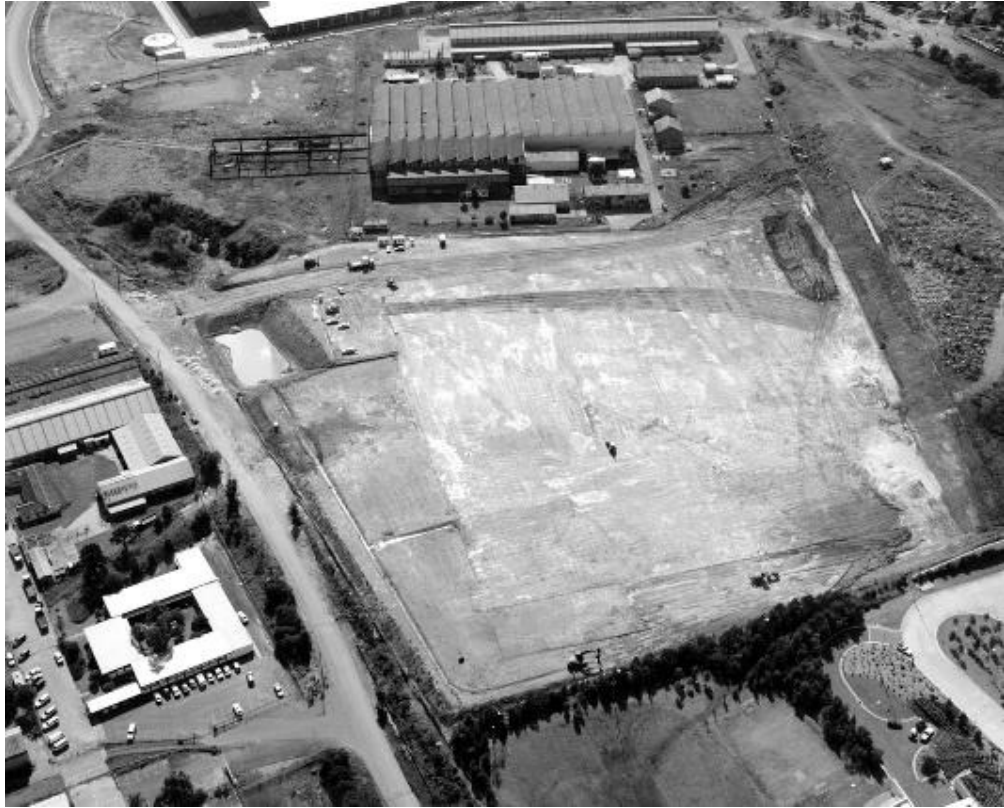


INDUSTRIAL DEVELOPMENT REMEDIATION & EARTHWORKS

ICA Property

Chullora, N.S.W.



The large earthworks portion of this contract involved excavation of over 65,000 cubic metres, and placing and compaction of 45,000 cubic metres on a 53,000 square metre site.

The bulk earthworks were complicated by the presence of over 7,000 cubic metres of boiler ash contamination, as well as over 1,000 tonnes over heavy-metal contaminated fill. Extensive stabilisation and treatment of the material was required to remediate the site, which adjoined an environmentally sensitive area.